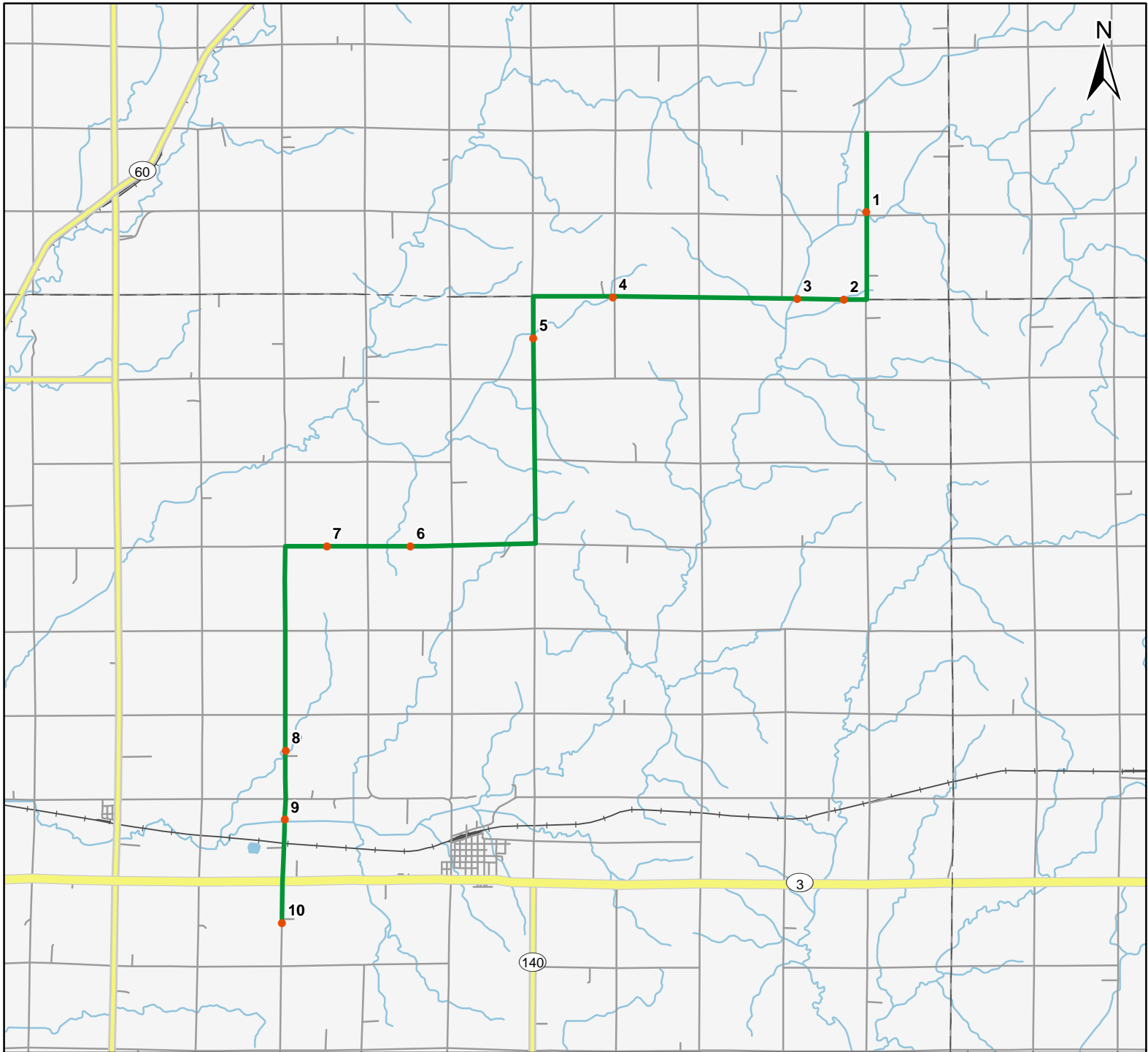


# North American Amphibian Monitoring Program



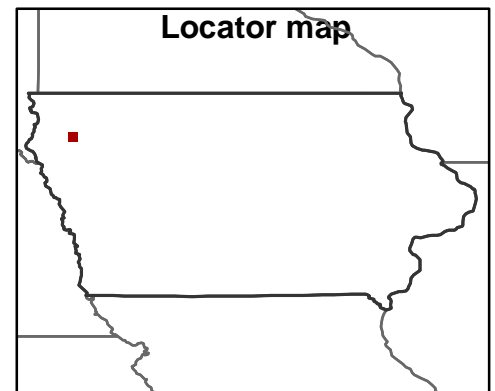
Route: 360108 Granville, IA



0 2 4 Miles

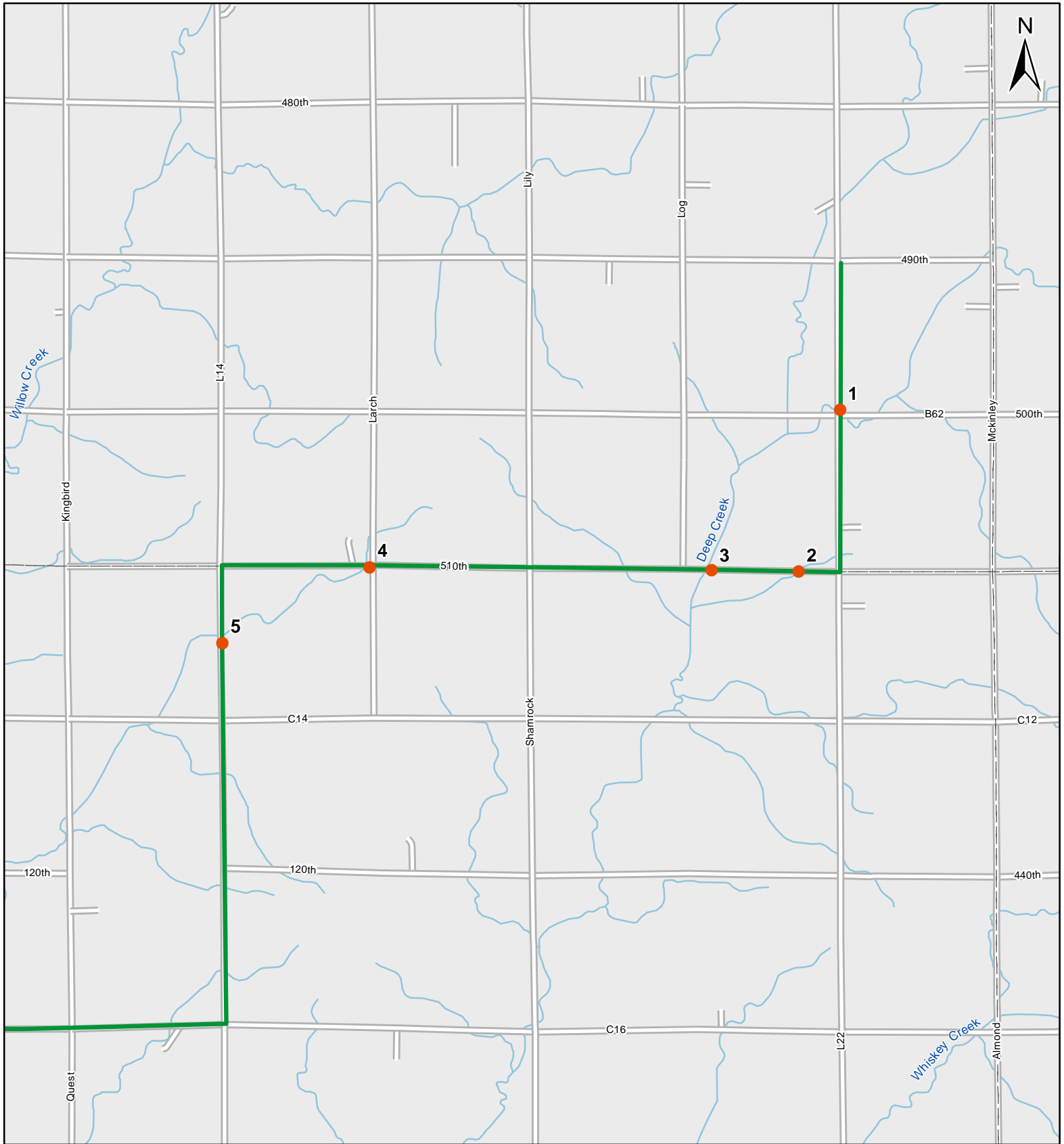
**Legend**

- Stop Locations
- Route Path



For more information, please visit the NAAMP website:  
<http://www.pwrc.usgs.gov/naamp/>

# Route: 360108 Granville, IA



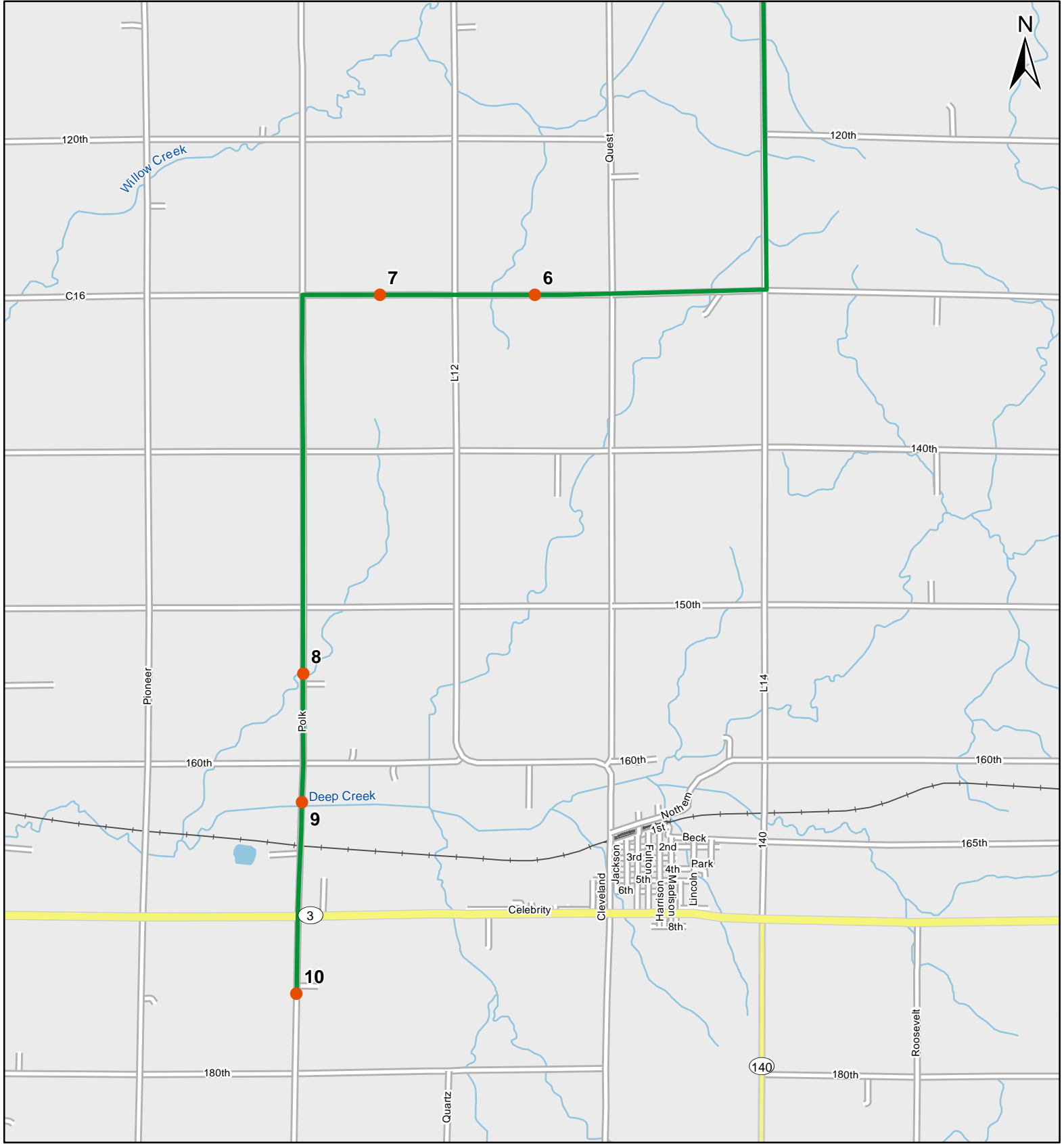
0 1 Miles

1:50,000

**Legend**

- Stop Locations
- Route Path

# Route: 360108 Granville, IA



0 1 Miles

1:50,000

**Legend**

- Stop Locations
- Route Path



# Frog and Toad Call Survey Route Description

Route ID **360108**

Established:

| Site Number | Name | County   | Latitude   | Longitude   | Directions   |
|-------------|------|----------|------------|-------------|--|
| 1           | 1    | Sioux    | 42.9244003 | -95.879097  | Start at intersection of L22 and 490th. Drive south 1 mile and stop at bridge at intersection with 500th.  |
| 2           | 2.2  | Sioux    | 42.9091988 | -95.8843994 | Continue south 1 more mile then take a right on 100th. Stop at grassed waterway on left side of road.  |
| 3           | 2.8  | Sioux    | 42.9094009 | -95.8955002 | Continue west Stop at narrow bridge over creek. Crop fields on both sides.   |
| 4           | 5    | Sioux    | 42.9096985 | -95.9391022 | Continue west on 510th (100th). Stop just past large hog confinement at a reed canary grass dominated waterway on the right.   |
| 5           | 6.5  | Plymouth | 42.9025993 | -95.9578018 | Continue west then turn south on Kiwi into Plymouth County. Stop just beyond (There is a field pull off) a tiny narrow creek running under the road.                   |
| 6           | 10.5 | Plymouth | 42.8665009 | -95.9868011 | Turn right to go west on C16. Stop at low wide grassy swath through crop fields on right. Looks like there may be a marshy area in the center. Not much of a pull off! |
| 7           | 11.5 | Plymouth | 42.8665009 | -96.0065994 | Continue west. Stop at narrow highly degraded looking creek on right side of the road. There is a field pull-off just beyond.  |
| 8           | 14.5 | Plymouth | 42.8310013 | -96.0162964 | Continue west then turn left (south) on Polk. Stop at bridge over small creek.   |
| 9           | 15.3 | Plymouth | 42.8189011 | -96.0165024 | Continue south. Stop at bridge with trestles.  |



# Frog and Toad Call Survey Route Description

10

16.6

Plymouth

42.8009987

-96.0171967

Continue south, cross highway 3. Stop at woodlot on left. Looks like a small creek may run through or at least some wet spots.